

IT'S BLUE
IT'S GREEN
IT'S FIRAD

Release 09 | 2024



FIRAD[®]

SIEMENS VDO-CONTINENTAL
INJECTOR
CATALOGUE

**OEM CODES AND PARTS NUMBERS ARE
GIVEN FOR REFERENCE PURPOSE ONLY**

OEM CODES AND PARTS NUMBERS ARE GIVEN FOR REFERENCE PURPOSE ONLY



ABBREVIATIONS

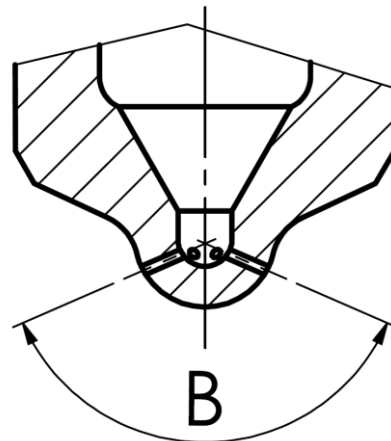
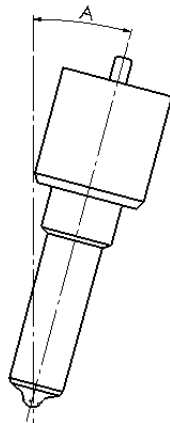
- Holes

In this section are reported the information about how many micro holes there are and their diameter, in this following way: <N.microholes> x <Diameter microholes>

- Angles

In this section are reported the information related to nozzle and micro holes angular position

Engine Angle	Spray Angle
A	B



OEM CODES AND PARTS NUMBERS ARE GIVEN FOR REFERENCE PURPOSE ONLY



FIRAD®

LET THE FUTURE COME



FIRAD code	VDO® Stamping	VDO® Injector Code	OE code	Vehicle/ Engine
ALLA140PM019	M0019P140	A2C59517051 A2C33352600	CITROËN 9801125480 FORD BK2Q-9K546-AG FORD 1840747 FORD 1746967 PEUGEOT 9801125480	CITROËN JUMPER Bus 2.0 BlueHDi 110 CITROËN JUMPER Bus 2.2 HDi 110 CITROËN JUMPER Bus 2.2 HDi 130 CITROËN JUMPER Bus 2.2 HDi 150 CITROËN JUMPER Kasten 2.0 BlueHDi 110 CITROËN JUMPER Kasten 2.0 BlueHDi 130 CITROËN JUMPER Kasten 2.2 HDi 110 CITROËN JUMPER Kasten 2.2 HDi 130 CITROËN JUMPER Kasten 2.2 HDi 150 CITROËN JUMPER Pritsche/Fahrgestell 2.0 BlueHDi 110 CITROËN JUMPER Pritsche/Fahrgestell 2.0 BlueHDi 130 CITROËN JUMPER Pritsche/Fahrgestell 2.2 HDi 110 CITROËN JUMPER Pritsche/Fahrgestell 2.2 HDi 130 CITROËN JUMPER Pritsche/Fahrgestell 2.2 HDi 150 FORD Ranger 2.2 TDCI FORD Ranger 3.2 TDCI FORD Transit 2.2 TDCI
ALLA142PM604	M0604P142	5WS40149-Z A2C59511612 A2C59513998	CITROËN 1980L0 CITROËN 00001980L0 MAZDA Y404-13-250A PEUGEOT 00001980L0 PEUGEOT 9663429280 PEUGEOT 1980L0	CITROËN C2 1.4 HDi CITROËN C3 I 1.4 HDi CITROËN C3 II 1.4 HDi PEUGEOT 307 / 1007 CITROËN C1/C2/C3 FORD FIESTA FUSION
ALLA145PM031	M0031P145	5WS40932 A2C39997000 A2C3999700080	NAVISTAR 7001105C1 FORD BK2Q-9K546-AG FORD BK2K9K546AG	FORD TROLLER 3.2 FORD Ranger 3.2 Land Rover Discovery
ALLA147PM007	M0007P147.6	A2C20009366 A2C59511606 5WS40087	166009445R RENAULT 8200380253 RENAULT 8200842205 RENAULT 16600 00Q1T NISSAN 16600 00Q0H NISSAN 16600 00Q0P NISSAN	NISSAN Note I NISSAN Qashqai / Qashqai+2 I NISSAN Tiida Sedan/ Hatchback RENAULT Megane II RENAULT Scénic II RENAULT Clio III RENAULT Laguna III RENAULT Kangoo II
ALLA150PM032	M0032P150	A2C3335190080	166000372R RENAULT 166092452R RENAULT 95523536 GENERAL MOTORS 166093282R RENAULT 166097675R RENAULT 166007840R RENAULT 1660000Q2K NISSAN 1660000Q2F NISSAN 1660000Q2H NISSAN 95519033 GENERAL MOTORS	NISSAN NV400 Van – Bus -Truck OPEL Movano B Van – Bus -Truck RENAULT Master III Van – Bus -Truck VAUXHALL Movano Mk2 Van – Combi - Truck

OEM CODES AND PARTS NUMBERS ARE GIVEN FOR REFERENCE PURPOSE ONLY



FIRAD®

LET THE FUTURE COME



FIRAD code	VDO® Stamping	VDO® Injector Code	OE code	Vehicle/ Engine
			95523532 GENERAL MOTORS 44 23 649 OPEL	
ALLA150PM034	M0034P150	A2C8139490080 A2C59514036	CK4Q-9K546-AA FORD 1819881 FORD	FORD Ranger Mk3
ALLA150PM1600	M1600P150	5WS40080 A2C59515264 A2C20009347	MWM 77550 FORD LK2400684	FORD RANGER 3.0 TD TROLLER T4 3.0 TROLLER PANTANAL 3.0
ALLA152PM1001	M1001P152	A2C59511610 AC259514911 5WS40086	FORD 4M5Q-9F593-AD FORD 1355051	FORD C-MAX 1.8 TDCi FORD FOCUS 1.8 TDCi FORD FOCUS Stufenheck 1.8 TDCi FORD FOCUS Turnier 1.8 TDCi FORD FOCUS C-MAX 1.8 TDCi FORD FOCUS II 1.8 TDCi FORD FOCUS II Stufenheck 1.8 TDCi FORD FOCUS II Turnier 1.8 TDCi FORD GALAXY 1.8 TDCi FORD MONDEO IV 1.8 TDCi FORD MONDEO IV Stufenheck (BA7) 1.8 TDCi FORD S-MAX (WS) 1.8 TDCi FORD TOURNEO CONNECT 1.8 TDCi /TDDi /Di FORD TOURNEO CONNECT 1.8 TDCi FORD TRANSIT CONNECT 1.8 Di FORD TRANSIT CONNECT 1.8 TDCi
ALLA152PM1003	M1003P152	A2C59514912 A2C59511611 5WS40250	FORD 7T1Q-9F593-AB FORD 1432322	FORD TOURNEO CONNECT 1.8 TDCi /TDDi /Di FORD TOURNEO CONNECT 1.8 TDCi FORD TRANSIT CONNECT 1.8 Di FORD TRANSIT CONNECT 1.8 TDCi FORD FOCUS C-MAX, C-MAX, GALAXY FORD MONDEO III/IV, S-MAX
ALLA153PM003	M003P153	5WS40156-4Z	CITROËN 00001980J4 CITROËN 1980J4 FIAT 9657144680 FORD 3M5Q-9F593-DB FORD 1373549 PEUGEOT 1980J4 PEUGEOT 00001980J4 VOLVO 36000315 VOLVO 36000317	CITROËN C4 I 2.0 HDi CITROËN C4 Coupe 2.0 HDi CITROËN C5 II 2.0 HDi CITROËN C5 II Break 2.0 HDi PEUGEOT 307 / 407 / 607 / 807 CITROËN XSARA FORD C-MAX
		5WS40156-Z	CITROËN 1980J5 CITROËN 00001980J5 FORD 1373550 FORD 3M5Q9F593EB PEUGEOT 1980J5 PEUGEOT 00001980J5 VOLVO 36000319 VOLVO 36000318	
ALLA153PM004	M0004P153	A2C59513597	6H4Q9K546DB LAND ROVER	LAND ROVER Range Rover III

OEM CODES AND PARTS NUMBERS ARE GIVEN FOR REFERENCE PURPOSE ONLY

FIRAD code	VDO® Stamping	VDO® Injector Code	OE code	Vehicle/ Engine
		5WS40387 5WS40253 A2C59513596	LR002473 LAND ROVER LR002475 LAND ROVER LR0008832 LAND ROVER LR0008834 LAND ROVER	LAND ROVER Range Rover Sport
ALLA153PM005	M0005P153	A2C59514910 A2C59511602 5WS40200	CITROËN 1980K5 CITROËN 00001980K5 FIAT 9659337980 PEUGEOT 1980K5 PEUGEOT 00001980K5	CITROËN C8 2.0 HDi CITROËN JUMPY 2.0 HDi 120 CITROËN JUMPY Kasten 2.0 HDi 120 FIAT ULYSSE FIAT SCUDO
ALLA153PM601	M0601P153			PEUGEOT, CITROEN, FORD, VOLVO
ALLA153PM1002	M1002P153	A2C59511316 5WS40103	1980H1 PEUGEOT 02C2S40004 JAGUAR 00001980H1 CITROËN	CITROËN C5 III JAGUAR S-Type JAGUAR XF Sedan PEUGEOT 407 PEUGEOT 607
ALLA154PM006	M0600P154		1875702C91 8C3Z-9E527-DRM FORD 1875072C91 INTERNATIONAL HARV. OE 8C3Z 9E527-A FORD OE 8C3Z 9E527-DRM FORD	Ford Powerstroke 6.4L
ALLA154PM012	M0012P154	5WS540677 A2C59513556	CITROËN 1980ET CITROËN 00001980R9 CITROËN 00001980ET CITROËN 9802448680 CITROËN 1980S0 CITROËN 1980ER CITROËN 1980R9 CITROËN 00001980ER CITROËN 00001980S0 FORD 1791017 FORD 1812616 PEUGEOT 1980ET PEUGEOT 1980S0 PEUGEOT 00001980ET PEUGEOT 00001980R9 PEUGEOT 1980ER PEUGEOT 00001980ER PEUGEOT 9802448680 PEUGEOT 00001980S0 PEUGEOT 1980R9 VOLVO 36001726 VOLVO 36001728 VOLVO 36001727 VOLVO 36001729	CITROËN BERLINGO 1.6 HDi CITROËN BERLINGO Kasten 1.6 HDi CITROËN BERLINGO Pritsche/Fahrgestell (B9) 1.6 HDi 90 16V CITROËN C3 II 1.6 HDi CITROËN C3 Picasso 1.6 HDi CITROËN C4 II 1.6 HDi CITROËN C4 Picasso I Großraumlimousine 1.6 HDi CITROËN C4 Picasso II 1.6 HDi / BlueHDi CITROËN C4 Grand Picasso I 1.6 HDi CITROËN C4 AIRCROSS 1.6 HDi CITROËN C5 III 1.6 HDi CITROËN C5 III Break 1.6 HDi CITROËN DS3/ DS4/ DS5 1.6 HDi FORD MAZDA VOLVO 1.6 cDi
ALLA155PM008	M0008P155	5WS540536 A2C59513484 A2C5321655180	DACIA 16 60 080 52R DACIA 16 60 043 05R DACIA 8200903034 NISSAN 16600 00Q1F RENAULT 16 60 043 05R	DACIA DUSTER 1.5 dCi DACIA DUSTER 1.5 dCi 4x4 DACIA DUSTER Kasten 1.5 dCi DACIA DUSTER Kasten 1.5 dCi 4x4 DACIA LODGY 1.5 dCi

OEM CODES AND PARTS NUMBERS ARE GIVEN FOR REFERENCE PURPOSE ONLY

FIRAD code	VDO® Stamping	VDO® Injector Code	OE code	Vehicle/ Engine
			RENAULT 8200903034 RENAULT 16 60 080 52R	
ALLA155PM018	M0018P155	A2C59511364 5WS40249 5WS40062	Ford 4H2Q-9K546-AF Land Rover LR008836 Land Rover LR006495	Land Rover Discovery Land Rover Range Rover
ALLA155PM027	M0027P155	A2C59507596	RENAULT 166006212R RENAULT 8201041272 RENAULT 166006526R RENAULT 1660000Q1W DACIA 16 60 062 12R DACIA 8201041272 DACIA 16 60 065 26R MERCEDES A 607 070 02 00 MERCEDES A 607 070 00 87	MERCEDES CITAN MERCEDES CLASSE A – B MERCEDES GLA – CLA RENAULT CAPTUR RENAULT GRAND SCENIC RENAULT KADJAR RENAULT KANGOO – MEGANE III NISSAN JUKE - QASHQAI
ALLA156PM002	M0002P156	5WS40249	4H2Q-9K54-6AF* FORD LR006495* LAND ROVER LR008836* LAND ROVER	LAND ROVER Discovery III LAND ROVER Range Rover Sport
ALLA162PM011	M0011P162	5WS40539 A2C59513554 A2C9626040080 A2C5325696180	AUDI 03L 130 277 B SEAT 03L 130 277 B VW 03L 130 277 B SKODA 03L 130 277 B	AUDI A1/A1 Sportback AUDI A3/A3 Sportback SEAT ALTEA, IBIZA, TOLEDO SKODA FABIA, OCTAVIA, RAPID, ROOMSTER VW GOLF VI, PASSAT, POLO, TOURAN

FIRAD code	VDO® Stamping	VDO® Injector Code	OE code	Vehicle/ Engine
ASLA142PV600	V0600P142	5WS40000-Z	CITROËN 1980F0 CITROËN 00001980F0 CITROËN 9652173780 PEUGEOT 9652173780 PEUGEOT 00001980F0 PEUGEOT 1980F0	CITROËN BERLINGO / BERLINGO FIRST Großraumlimousine 2.0 HDI CITROËN BERLINGO / BERLINGO FIRST Kasten 2.0 HDI CITROËN C5 I 2.0 HDi CITROËN C5 I Break 2.0 HDi CITROËN XSARA 2.0 HDi 90 CITROËN XSARA Break 2.0 HDI CITROËN XSARA Coupe 2.0 HDI PEUGEOT 307/407 PEUGEOT Partener 406 Facelift
ASLA144PV602	V0602P144			PEUGEOT1007/307 TOYOTA AYGO MAZDA 2 CITROËN C1/C2/C3
ASLA144PV605	V0605P144	5WS40148-Z A2C59513997	CITROËN 00001980E7 CITROËN 9655304880 CITROËN 9655304780 FORD 2S6Q9F593AB FORD 2S6Q9F593AA	CITROËN C3 Pluriel 1.4 HDi PEUGEOT 307 / 1007 CITROËN C1/C2/C3 FORD FIESTA FUSION

OEM CODES AND PARTS NUMBERS ARE GIVEN FOR REFERENCE PURPOSE ONLY



FIRAD®

LET THE FUTURE COME



FIRAD code	VDO® Stamping	VDO® Injector Code	OE code	Vehicle/ Engine
			FORD 2S6Q9F593BB FORD 2S6Q9F593AC PEUGEOT 1980E7 PEUGEOT 00001980E7 PEUGEOT 9655304880 PEUGEOT 9655304780	
ASLA152PV203	V203P152		03G 130 073S VW	
ASLA152PV208	V208P152		03G 130 073T* VW 03G 130 073T* AUDI 03G 130 073T* SEAT 03G 130 073T* SKODA	AUDI A3, A4 SEAT Altea, Leon, Toledo SKODA Octavia VW Golf, Passat, Touran

OEM CODES AND PARTS NUMBERS ARE GIVEN FOR REFERENCE PURPOSE ONLY

VDO nozzle geometric features

FIRAD code	VDO® Stamping	Engine angle	Spray angle	Holes
ALLA140PM019	M0019P140	0°	140°	8 x 0,120
ASLA140PV600	V0600P142	15°	142°	5 x 0,160
ALLA142PM604	M0604P142	12°30'	142°	6 x 0,110
ASLA144PV602	V0602MP144	14°	144°	6 x 0,110
ASLA144PV605	V605P144	14°	144°	6 x 0,110
ALLA145PM031	M0031P145	0°	145°	7 x 0,160
ALLA147PM007	M0007P147.6	14°	147°	6 x 0,120
ALLA150PM032	M0032P150	0°	150°	7 x 0,135
ALLA150PM034	M0034P150	0°	150°	8 x 0,120
ALLA150PM1600	M1600P150	0°	150°	6 x 0,195
ALLA152PM1001	M1001P152	19°	152°	7 x 0,125
ALLA152PM1003	M1003P152	19°30'	152°	7 x 0,110
ASLA152PV203	V203P152	0°	152°	6 x 0,160
ASLA152PV208	V208P152	0°	152°	6 x 0,160
ALLA153PM003	M003P153	0°	153°	6 x 0,150
ALLA153PM004	M0004P153	0°	153°	6 x 0,150
ALLA153PM005	M0005P153	0°	153°	6 x 0,110
ALLA153PM601	M0601P153	0°	153°	6 x 0,155
ALLA153PM1002	M1002P153	0°	153°	6 x 0,150
ALLA154PM006	M0006P154	0°	154°	6 x 0,200
ALLA154PM012	M0012P154	12°30'	154°	7 x 0,120
ALLA155PM008	M0008P155	15°	155°	7 x 0,110
ALLA155PM018	M0018P155	0°	155°	7 x 0,165
ALLA155PM027	M0027P155	13°30'	155°	7 x 0,115
ALLA156PM002	M0002P156	0°	156°	6 x 0,120
ALLA162PM011	M0011P162	0°	162°	7 x 0,120

OEM CODES AND PARTS NUMBERS ARE GIVEN FOR REFERENCE PURPOSE ONLY